



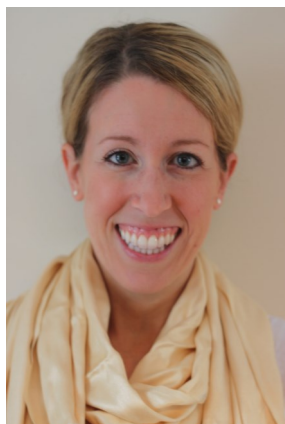
Department of Speech & Hearing Sciences

This presentation will provide a practical roadmap for speech-language pathologists (SLPs) to implement functional, person-centered interventions for people with neurogenic and neurodegenerative disorders across clinical settings. Assessment, goal writing, and reimbursable treatment plans that focus upon use of a life participation approach to care will be presented, with additional discussion regarding integration of technology to support evidence-based interventions. Group discussion, and interactive case presentations will take place throughout the workshop.

Learner Outcomes

- ◆ Describe how the World Health Organization's ICF framework and use of the life participation approach should guide goal-setting and clinical care for patients receiving speech-language therapy.
- ◆ Describe the difference between a diagnostic assessment vs. an assessment to develop a plan of care for individuals with neurogenic/neurodegenerative disorders.
- ◆ Describe the key components to conducting a person-centered, dynamic assessment.
- ◆ Describe the key components to writing a functional, reimbursable goal that supports the life participation approach to care.
- ◆ Describe four evidence-based approaches for the treatment of amnesic vs. aphasic neurogenic/neurodegenerative profiles.
- ◆ Describe the difference between direct vs. indirect use of technology to support evidence-based person-centered interventions.

About the Presenter



Becky Khayum, speech-language-pathologist, is co-founder of MemoryCare Corporation, a therapy company providing services for families coping with neurogenic and neurodegenerative conditions in the Chicago region. Becky is a research consultant at the Northwestern Cognitive Neurology and Alzheimer's Disease

Center in the area of Primary Progressive Aphasia. Her clinical expertise and research interests are in the area of person-centered, functional treatment approaches for cognitive-communication disorders with the integration of technology.

Speaker Disclosure

Financial: Becky Khayum, M.S., CCC-SLP receives a salary as the President and a speech-language pathologist at the MemoryCare Corporation. She has been a paid consultant since 2013 at the Northwestern Cognitive Neurology & Alzheimer's Disease Center in the area of primary progressive aphasia research. Ms. Khayum holds a contract with MedBridge as a CEU provider. She receives a speaking fee and reimbursement for travel expenses for this presentation.

Non-Financial: Becky Khayum, M.S., CCC-SLP has no relevant non-financial relationship to disclose.

Mail registration form and payment to:
 UNM Speech and Hearing Sciences
 Conference Registration
 1700 Lomas Blvd. NE Suite 1300
 Albuquerque, NM 87106

Name of attendee: _____ E-mail: _____
 Employer: _____ Phone: _____
 Payment (Circle one): Check Visa Mastercard Discover Amex PO Number Tuition Remission
 Card Number: _____ Exp Date: _____ CW: _____ Billing Zip Code: _____

	Early Bird Fee (before 9/15/17)	Regular Fee (9/16 - 9/28)	On-site Registration (9/29/17)
SLP	\$95	\$105	\$115
Supervisor	\$80	\$90	\$115
Group (5 or more)	\$85	\$95	\$115
Non-UNM Student	\$45	\$45	\$45
UNM Student	\$35	\$35	\$35

UNM tuition remission is available for those who are eligible.
 Payments via a PO will be accepted and are due to the Speech and Hearing Sciences no later than **October 27, 2017**.
NOTE: Group registrations and payment must be mailed in one package - no exceptions.

Please Note: Cancellation requests received before September 22, 2017 will be refunded, less a \$10.00 processing fee.